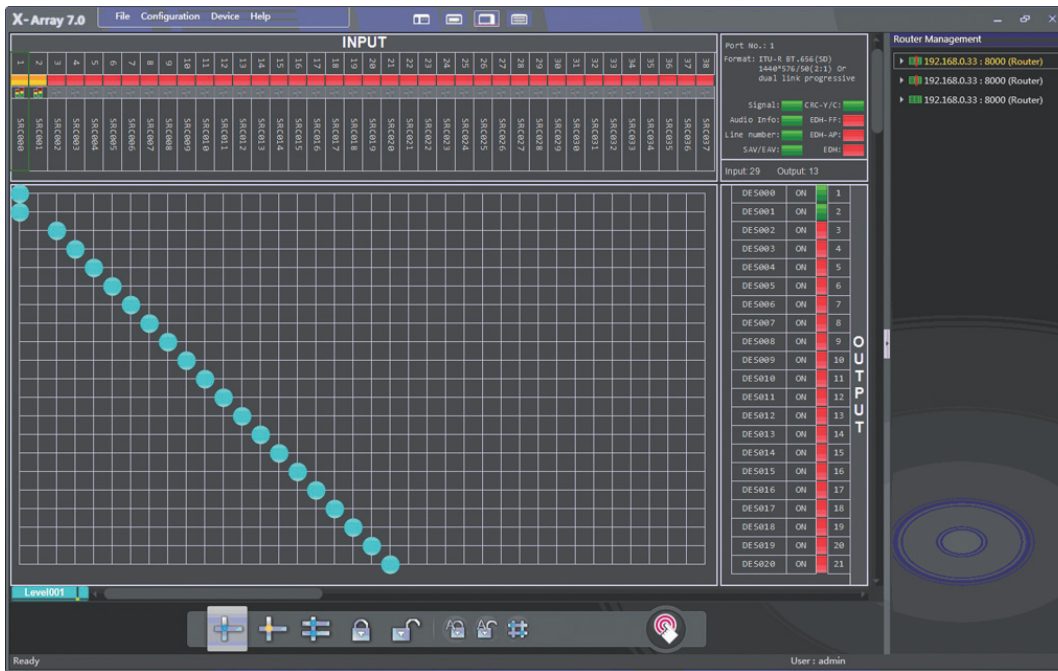


X-Array Windows-Based Routing Control and Status Software



The Windows-based X-Array provides simple control and monitoring of routing switchers in a wide range of sizes (4x4 ~ 1024x1024). X-Array offers single-bus, multi-bus and matrix views. The software allows you to reassign crosspoints, freeing you from the physical restraints of hardware crosspoint matrices and levels.

KEY FEATURES AND BENEFITS

- Based on Windows2000/XP or higher version
- Size available from 4x4 to 1024x1024
- Single-bus switch, multi-bus switch and preset switch
- Matrix viewing
- Frame and communication setting
- User management and password setting
- Input, output and level name assignment
- Lock crosspoint to prevent inadvertent operations
- Saves and restores switching status
- Allows multiple PCs to control the router on a LAN
- Stores operation records for the latest 30 days
- Real-time alarm for operation errors